

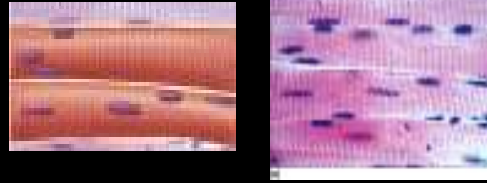
## Muscle Tissues:

- A. Muscle cells, or fibers, contain actin and myosin protein filaments that can contract, and this action moves body parts.
- B. There are three types of muscle tissue:
1. **Skeletal:** muscle cells have many nuclei and are striated.
  2. **Smooth:** muscle cells are spindle shaped with a single nucleus
  3. **Cardiac:** muscle cells are striated and branched, connected by intercalated disks; one nucleus per cell

5 - 64

## 1. Skeletal Muscle Tissue

- ◆ **Location:** attached to bone.
- ◆ **Function:** voluntary movement (under your control).



5-65

## 2. Smooth Muscle Tissue

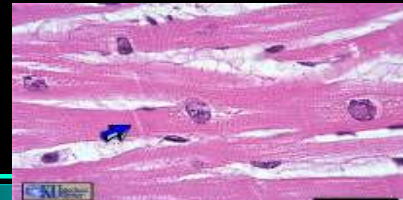
- ◆ **Location:** walls of internal organs, digestive tract, and blood vessels
- ◆ **Function:** involuntary movement (not under your control).



5 - 66

## 3. Cardiac Muscle Tissue

- Location:** only in the heart
- Function:** involuntary movement (not under your control)



5 - 67

## Nervous Tissues:

- ◆ **Location:** brain, spinal cord, and nerves.
- ◆ **Function:** conduct nervous impulses throughout the body



5 - 68

## Types of Nervous Cells:

1. **Neurons**, or nerve cells, conduct nervous impulses
2. **Neuroglia**, or helper cells, support and nourish the neurons.



5 - 69

### A neuron has 3 parts:

1. **Dendrite:** collects or receives signals
2. **Cell body:** contains nucleus & most of the cytoplasm
3. **Axon:** conducts or sends away nerve impulses

