

## Regions of the Body

E. The body can be divided into two main portions:

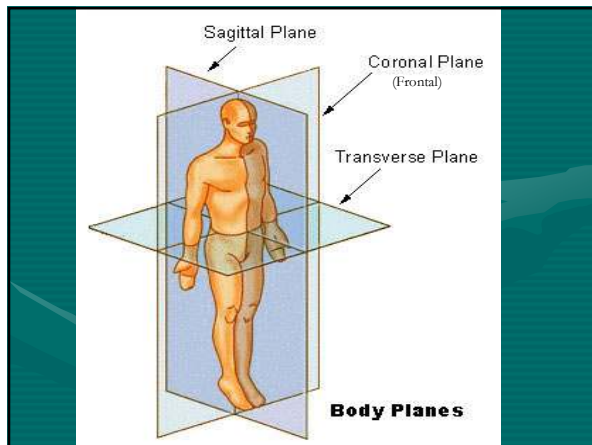
1. **Axial** includes head, neck, and trunk.
2. **Appendicular** includes upper and lower limbs.



## Planes and Sections of the Body

F. The body or its parts may be sectioned along certain planes:

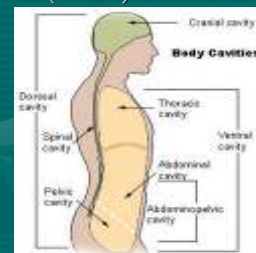
1. **Sagittal** (vertical): divides body into right and left portions.
2. **Frontal** (coronal): divides body into anterior and posterior parts.
3. **Transverse** (horizontal): a cross section; divides the body into superior and inferior parts.



## Body Cavities

G. The human body has two major cavities:

1. **Posterior** (dorsal) : toward the back.
2. **Anterior** (ventral): toward the front.



H. Each major cavity is subdivided into smaller cavities within which specific viscera (organs) are located.

1. **Posterior cavity** is subdivided into **cranial** cavity and **spinal** cavity.
2. **Anterior cavity** is subdivided into
  - a. superior **thoracic** cavity (contains **pleural** cavity & **pericardial** cavity)
  - b. inferior **abdominopelvic** cavity (contains **abdominal** cavity & **pelvic** cavity)

## Body Regions

The human body is further divided into various body regions.

